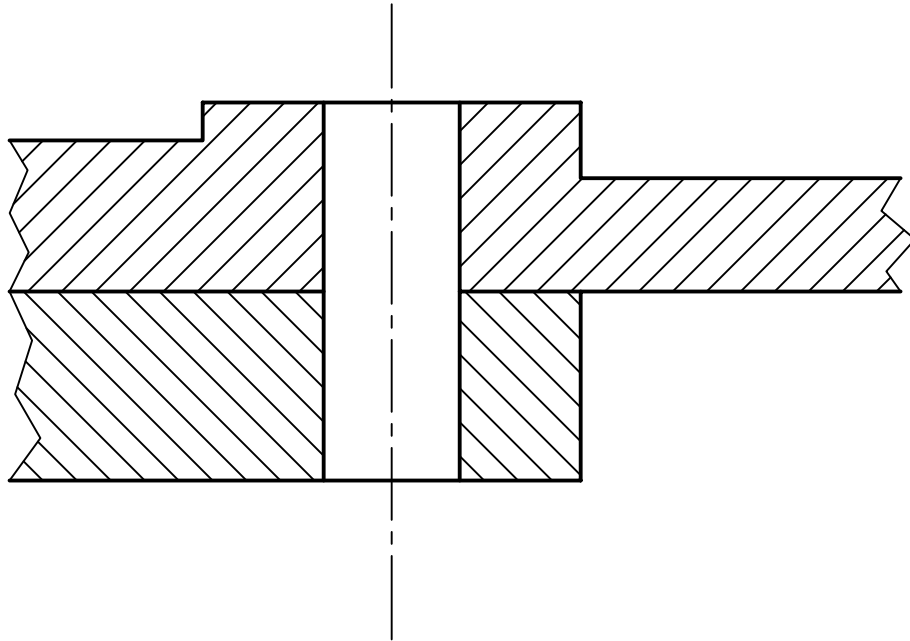


A) Two machine parts are to be fastened together by an M16 bolt (70 length and 40 thread length), a plain washer and a nut.



B) The bottom plate is drilled to the depth of 30 mm before being tapped to the depth of 25 mm for an M16 Hexagon Socket Head Cap Screw. The capscrew is 30 mm long and has a thread length of 20 mm. Draw the screw in assembly.

